

PAP SCADA

A Comprehensive, Proven Cyber Defense Solution for SCADA & ICS

Get the Protection You Need for All Your Critical Assets!

PAP SCADA is a cyber defense solution specifically designed to counter evolving cyber threats affecting SCADA and ICS (Industrial Control Systems) systems, in order to prevent significant, long-term damage while the systems remain operational.

SCADA and ICS are core components of any industrial or critical infrastructure, presenting unique challenges – such as the need to defend legacy systems, long life cycles, real-time operations, open protocols, upgrade/update processes, etc.

Recently, cyber threats have begun posing new dangers, causing actual physical damage to critical infrastructures, production processes, etc. The patented PAP SCADA cyber defense solution, specifically designed for the OT world, provides a targeted response to these threats. It delivers an innovative, holistic and interdisciplinary solution for all critical systems.

Benefits

- A multi-disciplinary cyber defense solution designed specifically for SCADA systems.
- Provides complete physical layer protection, defending PLCs, RTUs, Sensors & Actuators with a combination of data collected from the SCADA system and from proprietary PAP sensors.
- Detects cyberattacks on industrial facilities while ensuring uninterrupted operations.
- Holistic, layered protection approach integrates OT and IT.
- Defense, protecting the physical, networking, and computing layers to provide end-to-end SCADA system security.
- Advanced Situational Awareness based on Big Data displays and manages all events created by the physical layer protection system, and all computing and network layer events. Dashboards tailored to each facility present real-time alerts, allowing immediate action upon detection.

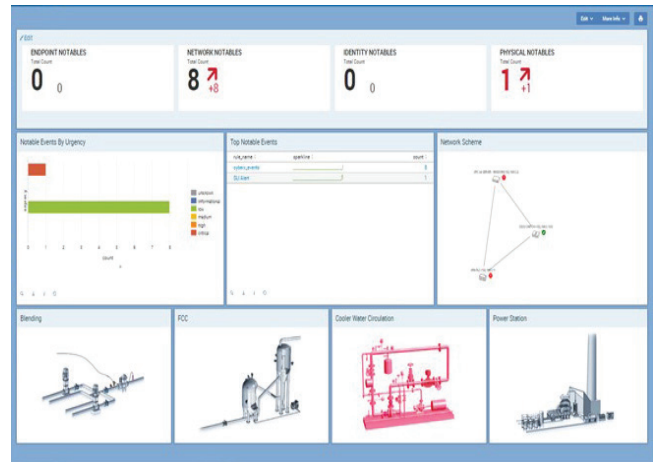
Four Protection Layers

- 1. Security Situation Awareness Layer** - SCADA cybersecurity monitoring center, developed by PAP, combines both physical (OT) and cybernetic (IT) aspects.
- 2. Computing Infrastructure Layer** - Integrated protection for the industrial computing infrastructure.
- 3. Industrial Network Protection Layer** - Integrated protection layer for the industrial network, such as industrial IDS, firewall and data diodes.
- 4. Physical Layer** - Patented technology developed by PAP, monitoring the physical system, and identifying cyberattacks via analysis of the physical parameters of the system.



Main Features

- Multi-layered, end-to-end solution providing a customized combination of COTS cybersecurity products and PAP's patented Secure Logic Infrastructure (SLI) technology.
- A Cyber Control Center merging cybernetic and physical inputs, presenting a comprehensive representation of the facility's security posture.
- Unique sensors ensuring credible readings at critical points of the facility, parallel and non-dependent on the monitored SCADA system sensors.
- Patented technology monitoring the PLC and RTU layers identifies advanced cyberattacks based on physical parameters and behavior analysis.
- A hardware-based physical layer solution, specifically designed for harsh operational environments.



PAP has over 20 years of proven and superior expertise with IT & OT cyber defense. We well understand that a SCADA system's main goal is to sustain system availability, as well as to preserve system integrity and data confidentiality.

With this in mind – and based on our extensive experience with defense systems, real-time control, process modeling, and multidisciplinary knowhow – we have built this innovative solution, designed to meet the security requirements of the most critical facilities.